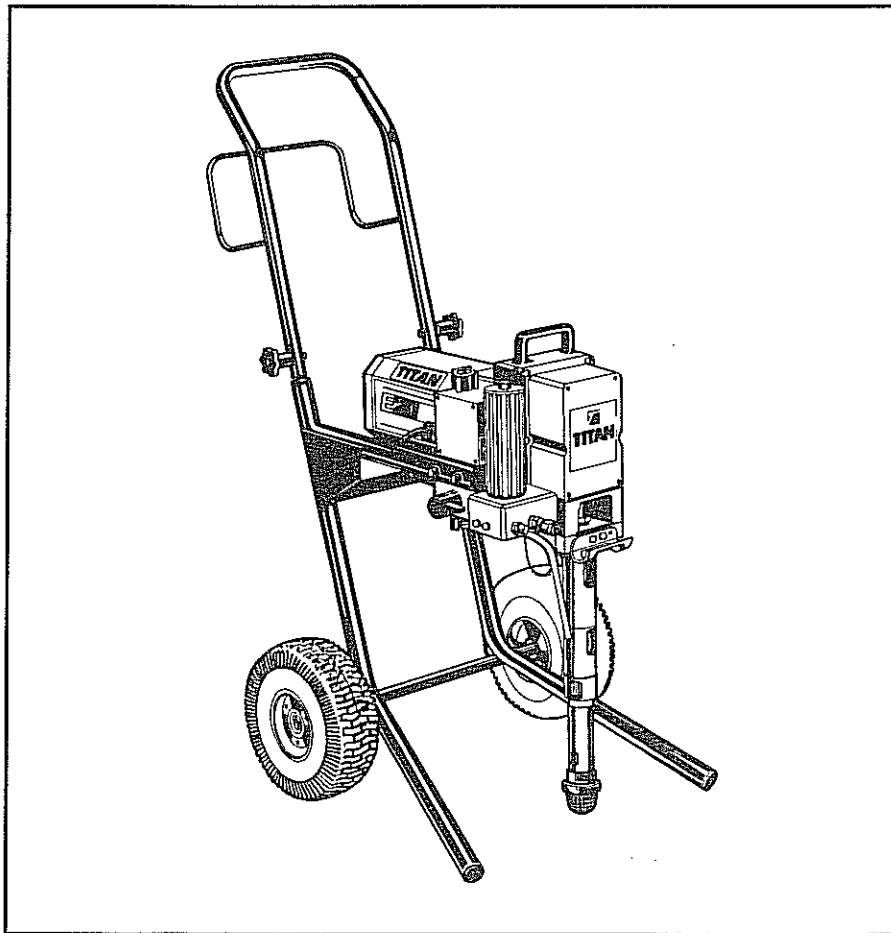


# TITAN

OWNERS MANUAL  
FOR PROFESSIONAL  
USE ONLY  
313-247 REV 7/92A

DO NOT USE EQUIPMENT BEFORE READING THIS MANUAL

## Elite E200



Pump Only - 761-502  
Complete - 761-500

220V Pump Only 761- 238  
220 V Complete 761 -240

This manual contains important warnings and instructions,  
please read and retain for reference.  
Never operate this unit unless it is properly grounded.

# TITAN

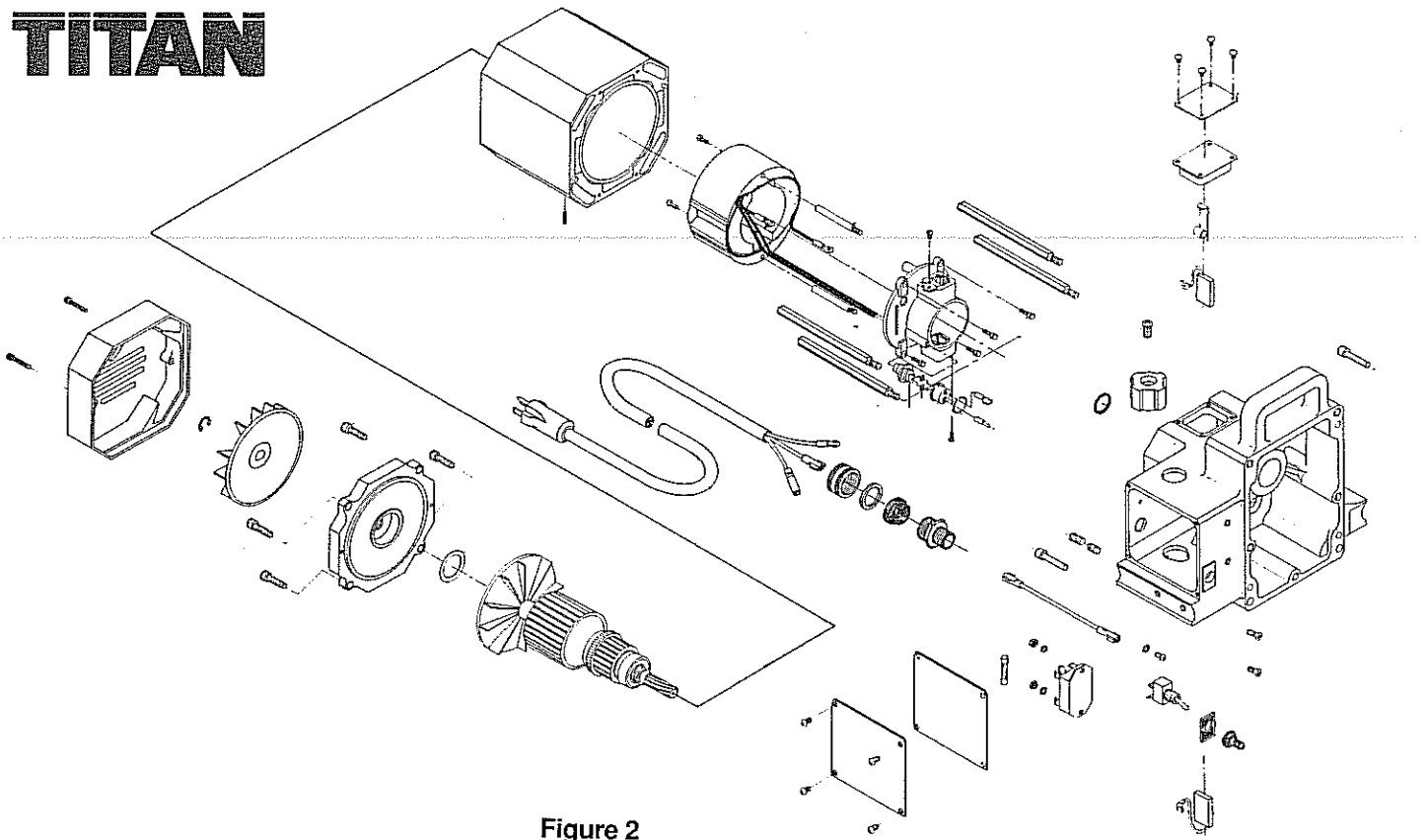


Figure 2

## Frame

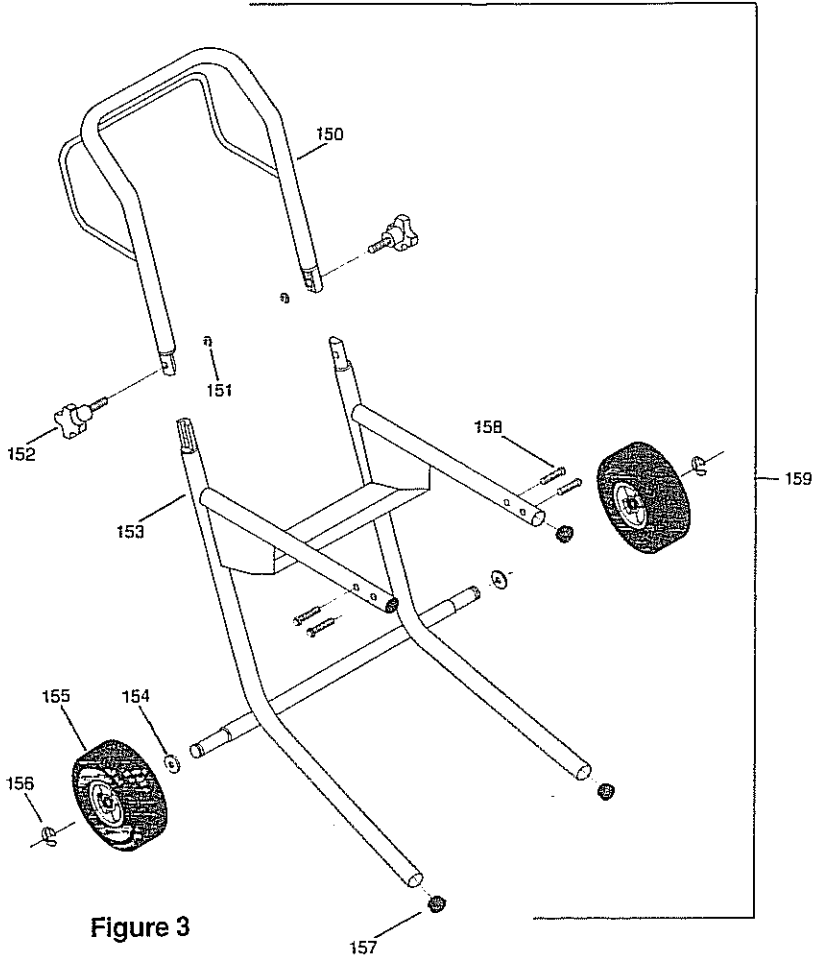


Figure 3

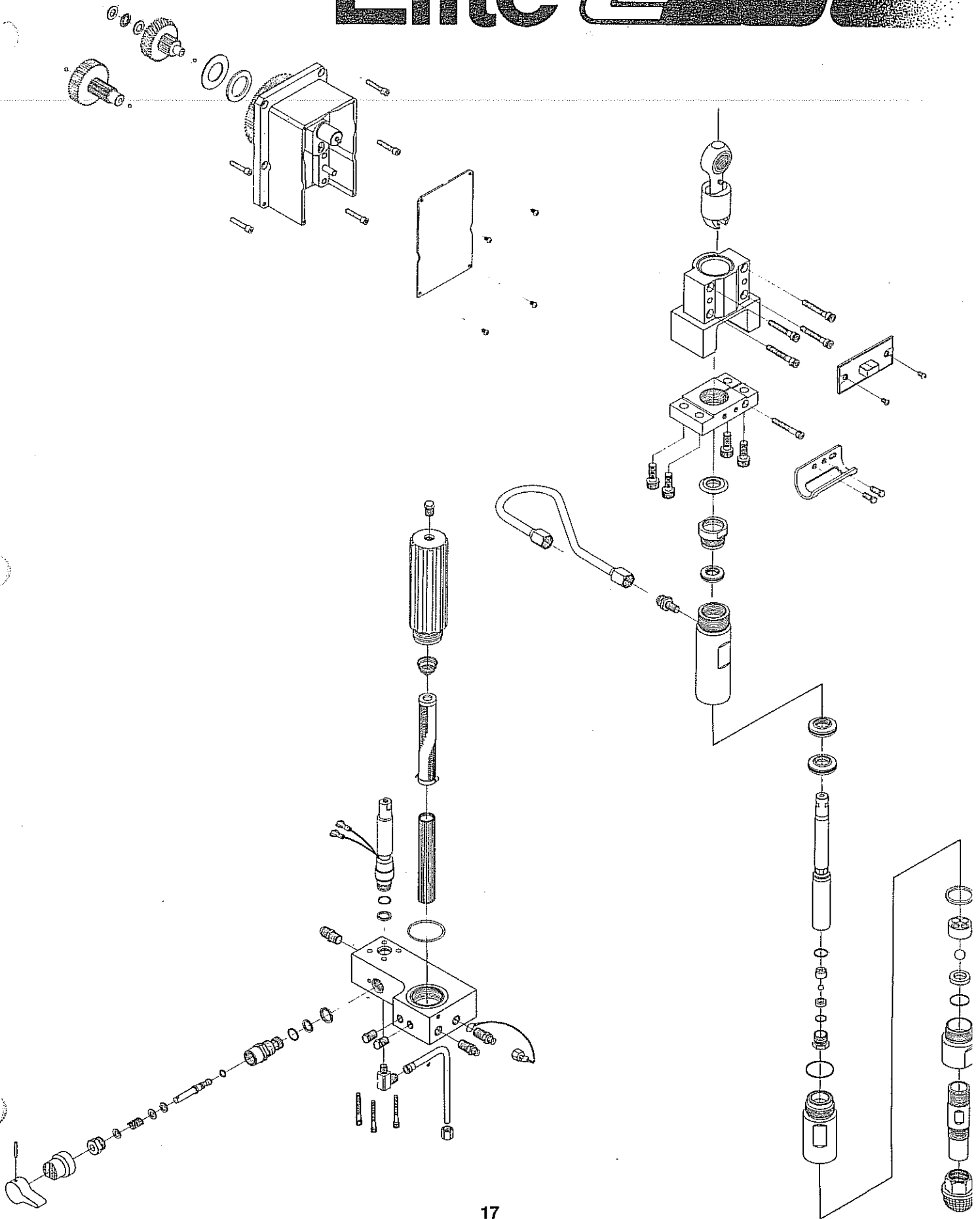
ITEM NO	PART NO	DESCRIPTION	QTY
150	761-410	Handle	1
151	761-405	Snap Ring	2
152	761-412	Knob	2
153	761-421	Frame Legs (Incl. #157)	1
154	710-058	Washer	2
155	710-044	Wheel	2
156	710-194	Snap Ring	2
157	710-199	Plug	2
158	761-178	Screws	4
159	761-400	Frame Complete	1

(Does not include #158)

## Replacement Labels

PART NO	DESCRIPTION	QTY
313-125	"TITAN"	2
313-124	"E 20"	2
313-191	"Warning Label, In English	1
313-201	" Warning/Attention Label in French	1
313-130	Front Plate	1

# Elite E200



# UNITEC Motor Complete

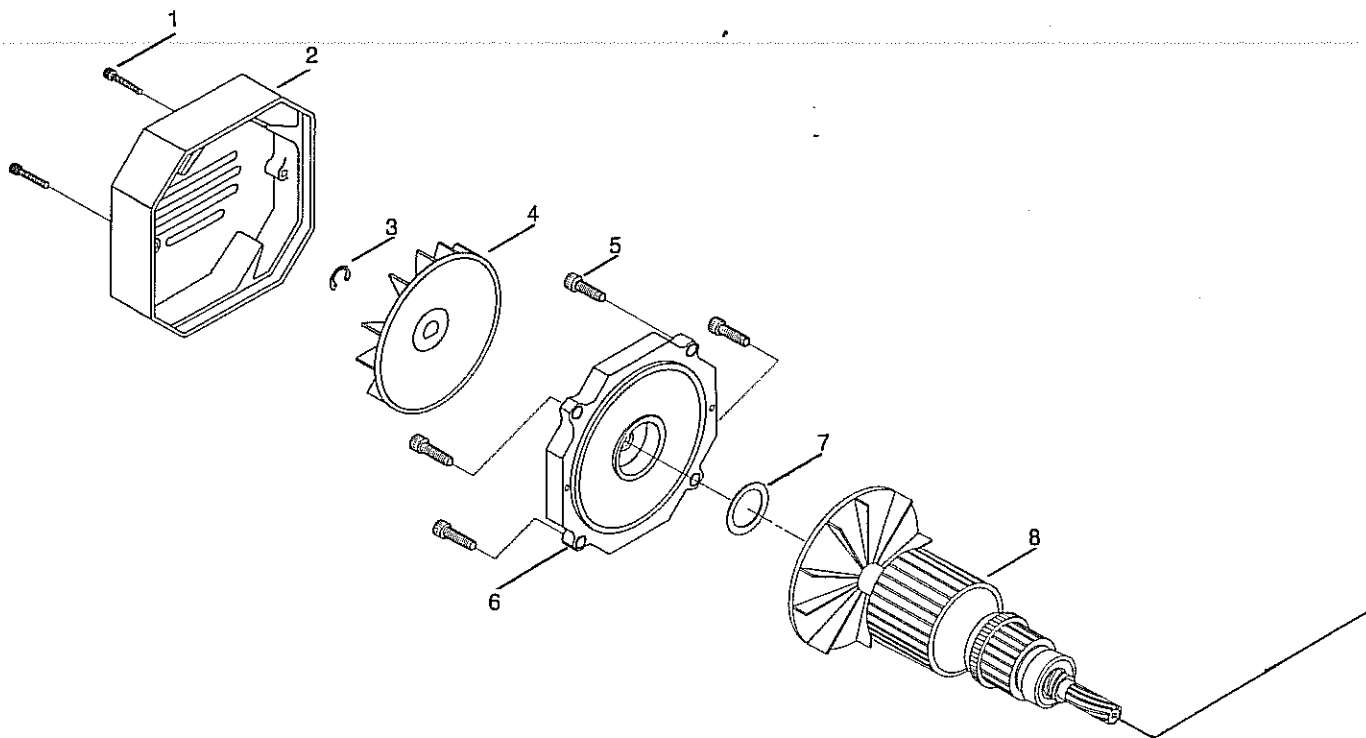


Figure 4

ITEM NO	PART NO	DESCRIPTION	QTY
1	761-023	Screw	2
2	761-027	Rear Cover	1
3	611-405	Snap Ring	1
4	702-040	Outer Fan	1
5	700-681	Screw	4
6	761-028	Rear Motor Housing	1
7	702-047	Wave Washer	1
8	761-302	Armature 120V	1

## For 220 Volt Units:

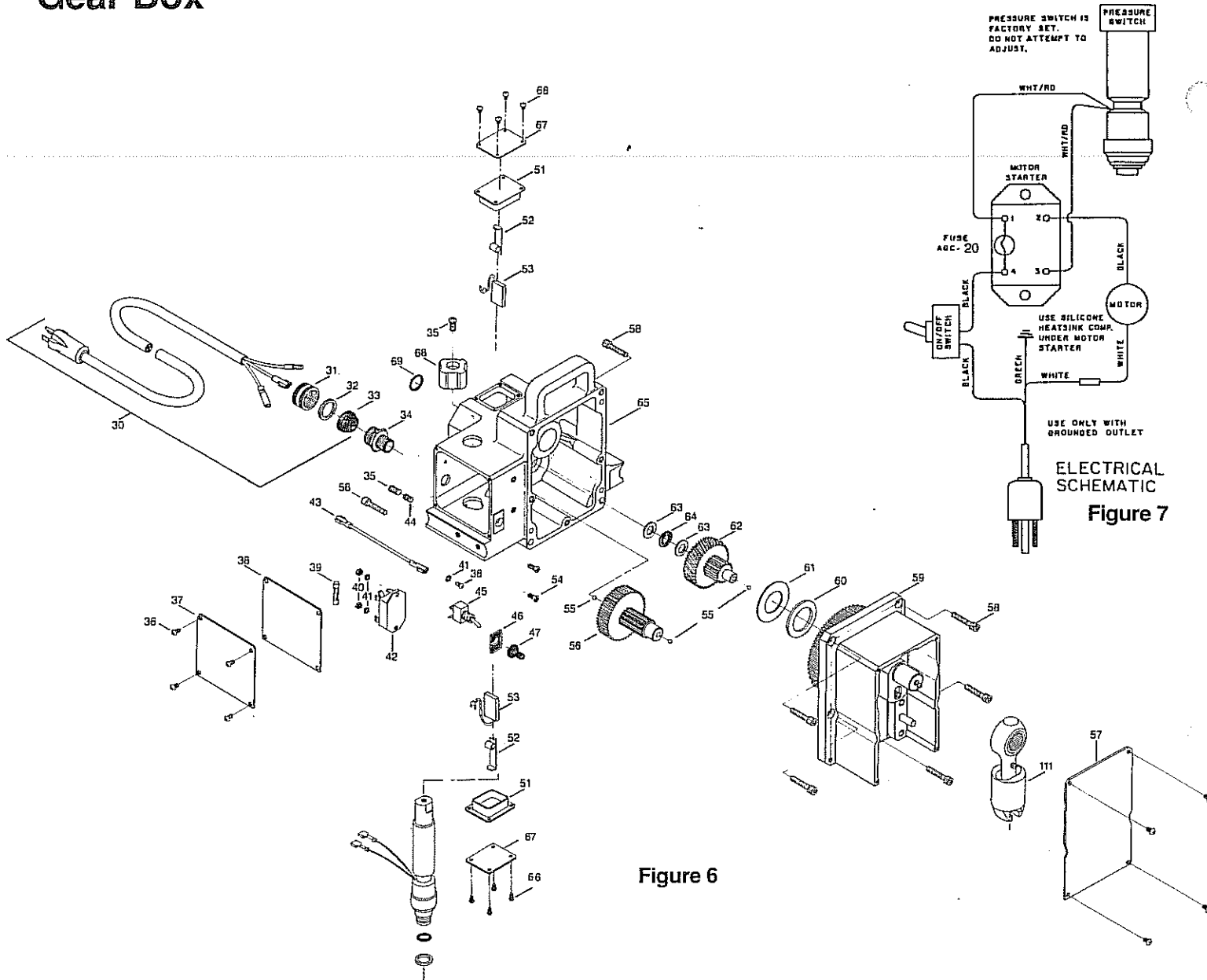
ITEM NO	PART NO	DESCRIPTION	QTY
8	761-231	Armature 220 V	1

## Armature Replacement

**WARNING:** Before proceeding, follow the Pressure Relief Procedure outlined on Page 3. Additionally, follow all other warnings to reduce the risk of an injection injury, injury from moving parts or electric shock, Always unplug the sprayer before servicing!

1. Remove Rear Cover (#2) by taking out screws (#1).
2. Remove Snap Ring (#3).
3. Remove Fan (#4).
4. Remove Rear Motor Housing (#6) by removing screws (#5). **NOTE:** Make sure to remove Wave Washer (#7) which should be on the End Bearing of the Armature.
5. Remove Motor Brushes. Follow Brush replacement procedure. Located on page 20.
6. Remove Armature by gently rocking and pulling Fan from rear of pump.
7. Inspect Armature. If damaged, replace.
8. To replace Armature, reverse steps 1 through 6 here.

# Gear Box



ITEM NO	PART NO	DESCRIPTION	QTY	ITEM NO	PART NO	DESCRIPTION	QTY
30	710-150	Power Cord (#31-33)	1	51	702-039	Brush Insulator	2
31	710-157	Cord Grip Nut	1	52	702-067	Brush Spring	2
32	710-156	Cord Grip Washer	1	53	702-066	Brush	2
33	710-155	Rubber Grommet	1	54	700-714	Screw	2
34	710-154	Cord Grip Housing	1	55	761-116	Thrust Ball	3
35	700-784	Screw	2	56	761-083	Output Pinion Gear	1
36	700-653	Screw	9	57	761-193	Front Cover	1
37	761-132	Plate	1	58	761-114	Screw	7
38	761-192	Insulator Plate	1	59	761-100	Crankshaft Housing	1
39	710-050	Fuse 20 Amp	1	60	761-221	Bearing	1
40	700-714	Nut	2	61	700-680	Washer	1
41	700-785	Lock Washer	3	62	761-084	Interior Pinion Gear	1
42	700-657	Motor Starter	1	63	761-102	Washer	2
43	710-064	Wire	1	64	761-101	Bearing	1
44	700-715	Screw	1	65	761-086	Motor Housing (Inc. #69)	1
45	700-646	Toggle Switch	1	66	730-260	Screw	8
46	700-775	On/Off Plate	1	67	702-053	Brush Plate	2
47	700-645	Rubber Boot	1	68	700-771	Knob	1
				69	702-079	O-Ring	1

# Filter Block

ITEM NO	PART NO	DESCRIPTION	QTY
48	761-195	Pressure Switch (Incl. #49)	1
49	700-499	O-Ring	1
50	700-483	Gasket	1
80	761-697	Bypass Valve Handle	1
81	761-761	Pin	1
82	761-697	Bypass Cam Base	1
83	761-731	Bypass Valve Retainer	1
84	761-705	Washer	1
85	761-698	Spring	1
86	761-706	Washer	2
87	761-763	Stem (Incl. 88)	1
88	221-008	O-Ring	1
89	761-755	Bypass Housing	1
90	761-721	Back-up Ring	1
91	761-722	O-Ring	1
92	761-537	Gasket	1
93	761-757	Bypass Valve Assembly	1
94	761-160	Connector	1
95	761-456	O-Ring	1
96	761-452	Filter Core	1
97	761-043	Filter Cartridge	1
98	730-083	Spring	1
99	761-451	Filter Housing	1
100	710-069	Plug	3
101	761-422	Filter Block (Incl. #95)	1
102	730-222	Outlet Cup Assembly	1
103	490-006	Fitting	2
104	700-701	Nut	1
105	750-039	Pressure Release Tube	1
106	730-262	Screw	3
107	710-087	Pressure Release Elbow	1
108	761-351	Filter Block Complete (Does not include #48-50, 106)	

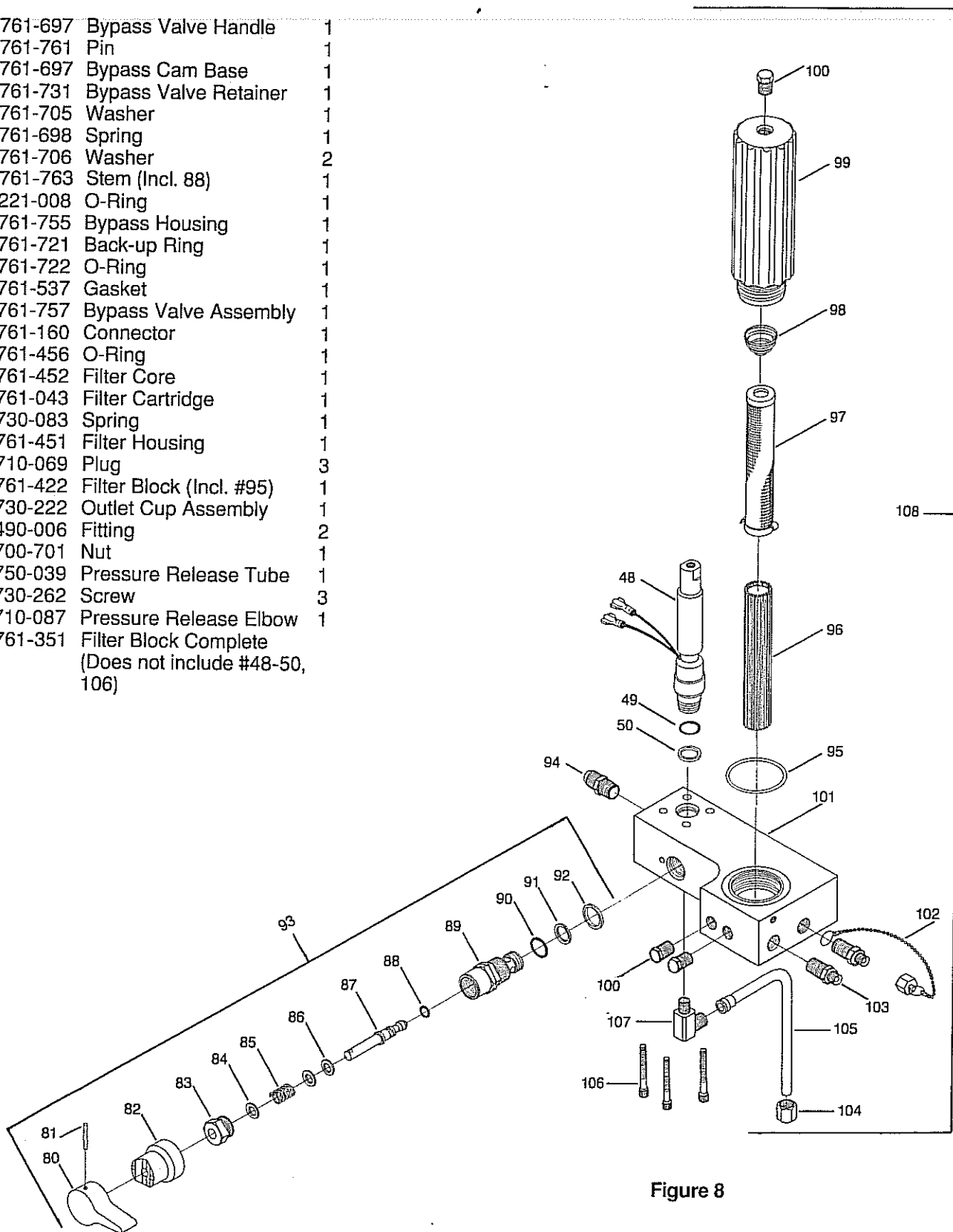
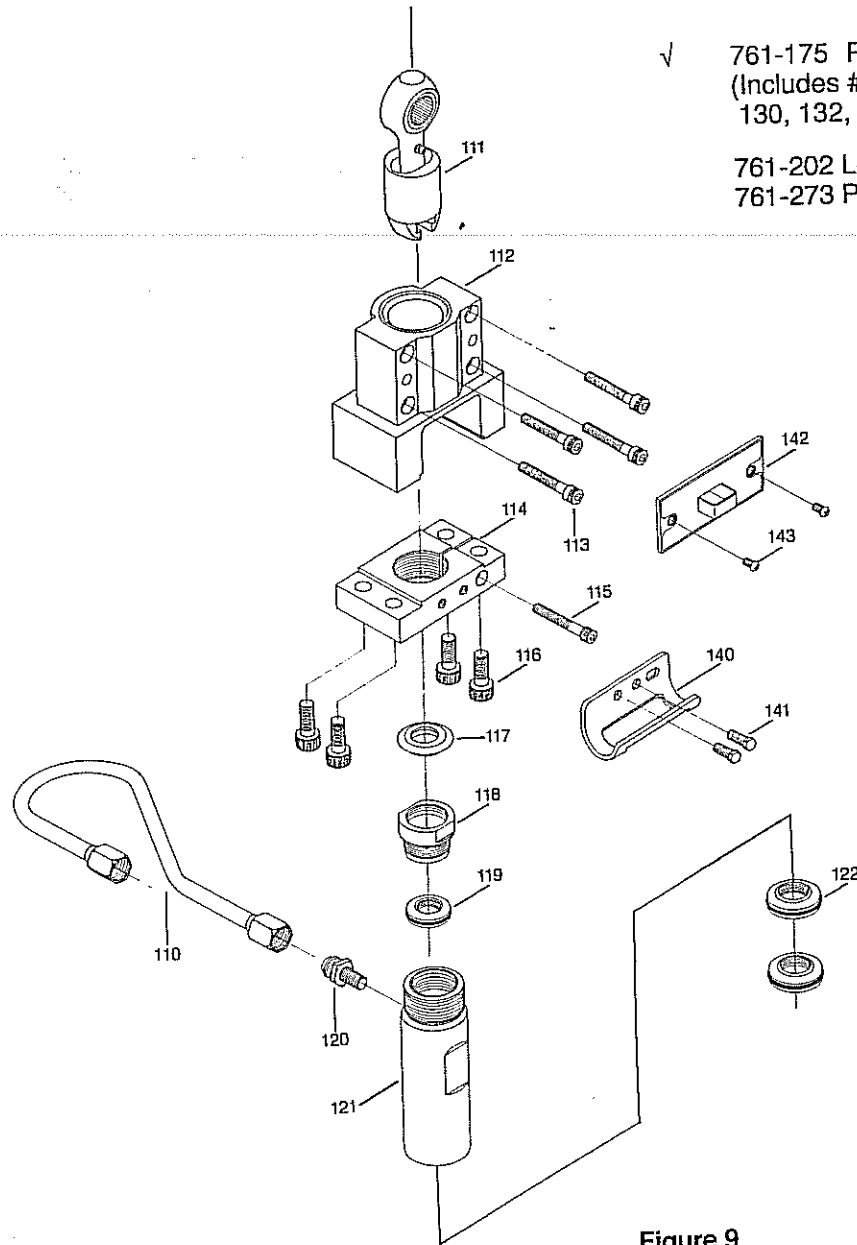


Figure 8

# Fluid Section



√ 761-175 Repacking Kit  
 (Includes #119, 122, 124, 126, 128,  
 130, 132, 134, 136)

761-202 Lower Packing Tool  
 761-273 Piston Guide Tool

Figure 9

ITEM NO	PART NO	DESCRIPTION	QTY	ITEM NO	PART NO	DESCRIPTION	QTY
110	761-152	Pipe Assembly	1	130	761-103√	O-Ring	1
111	761-062	Crank Slide & Connecting Rod	1	131	761-064	Lower Housing (Incl. #130)	1
112	761-108	Slider Housing	1	132	761-076√	Lower Poly Seal	1
113	761-115	Screw	4	133	761-075	Lower Cage (Incl. #132)	1
114	761-034	Upper Mount	1	134	*761-145√	Lower Ball	1
115	761-149	Screw	1	135	761-080	Lower Seat (incl. #136)	1
116	761-148	Screw	4	136	761-058√	O-Ring	1
117	761-162	Splash Guard	1	137	761-123	Foot Valve Housing	1
118	761-077	Upper Guide	1	138	761-153	Down Tube	1
119	761-136√	Upper Seal	1	139	710-046	Inlet Screen	1
120	761-159	Connector	1	140	761-033	Pail Hook	1
121	761-118	Upper Housing	1	141	710-033	Screw	2
122	761-138√	Lower Seal	2	142	761-171	Safety Plate	1
123	761-117	Piston Rod	1	143	730-260	Screw	2
124	761-111√	Upper Poly Seal	1				
125	761-078	Upper Cage (Incl.#124)	1				
126	*761-144√	Upper Ball	1				
127	761-079	Upper Seat ( Incl. #128)	1				
128	761-057√	O-Ring	1				
129	761-073	Retainer	1				

\*Recommended Tool Box Parts

761-204 Fluid Section Complete  
 (Does not include #110, 111, 112, 113,  
 116, 138-143)

# Seat Service and Repair

**WARNING:** Before proceeding, follow the Pressure Relief Procedure outlined on Page 3. Additionally, follow all other warnings to reduce the risk of an injection injury, injury from moving parts or electric shock, Always unplug the sprayer before servicing!

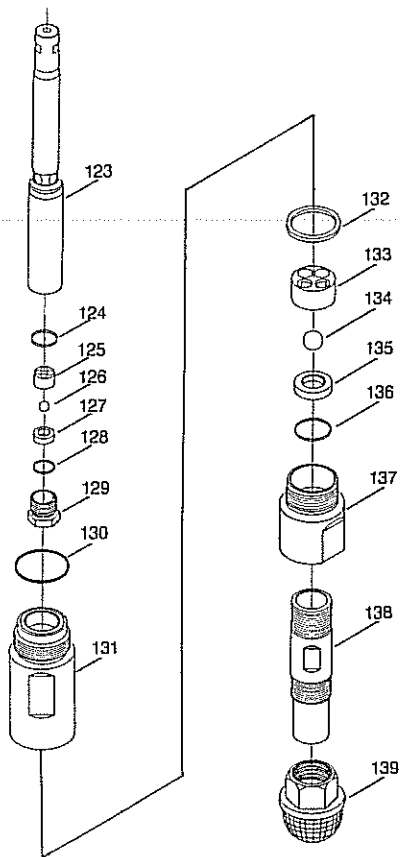


Figure 10

The design of Titan's Elite Fluid Section allows access to the inlet and outlet balls and seat without completely disassembling the Fluid Section. It is possible that the Balls may not seat properly because of debris stuck in the inlet or outlet seat. Follow the instruction below for access to those areas.

1. Place a wrench on the Foot Valve (#137) and unthread.
2. Clean out all debris. Examine Ball and Seat. If damaged replace. Continue if necessary or re-install.
3. Place a wrench on the Lower Pump Housing (#131) and unthread.
4. Place a wrench on the Retainer (#129) and unthread.
5. Clean out all debris. Examine Ball and Seat. If damaged replace.
6. Reassemble and test unit. Should unit not perform properly consult the Trouble Shooting Guides on pages 13 & 14 of this manual or continue with the Repair and Packing Replacement instructions below.

## Pump Section Repair and Packing Replacement

**WARNING:** Before proceeding, follow the Pressure Relief Procedure outlined on Page 3. Additionally, follow all other warnings to reduce the risk of an injection injury, injury from moving parts or electric shock, Always unplug the sprayer before servicing!

1. Stop Sprayer at the bottom of its stroke and remove Safety Plate #142.
2. Using a 3/8" allen wrench remove four screws (#116).
3. Using a 3/4" wrench loosen the retaining nut on the Pipe Assembly (#110) from Item #120.
4. Place a screwdriver between Item #114 and #112 and lightly pry downward.
5. Pull Fluid Section Forward.
6. Place Foot Valve Housing (#137) in a vise and use a wrench on the Lower Housing (#131) to unthread.
7. Remove the Seal (#132) from inside the Lower Housing (#131).
8. Remove the Lower Cage (#133) from the Foot Valve Housing (#137).
9. Remove Ball (#134) and examine.
10. Remove Seat (#135). If damaged use other side or replace.
11. Remove Seal (#136).
12. Place the Lower Housing in a vise and use a wrench on the Upper Housing (#121) to unthread.
13. Remove Seal (#130) from outside of the Lower Housing (#131).

14. Place the Upper Housing (#121) in a vise and use a wrench on the upper Guide (#118) to unthread.
15. Using a Plastic Mallet Tap the Piston (#123) out of the Bottom of the Upper Housing (#121).
16. Place the Piston (#123) in the slots of the Slider (#111) which is still mounted on the unit. This will hold the Piston in-place when removing the Retainer (#129).  
NOTE: Never use wrench on the Piston.
17. Remove Seal (#124) from inside of Piston (#123).
18. Remove Upper Cage (#125) from the Retainer (#129).
19. Remove the Upper Ball (#126) and examine.
20. Remove Seat (#127). If damaged use the other side or replace.
21. Remove Seal (#128) from the Retainer (#129).
22. Remove the Upper Packing (#119) from the Upper Housing (#121).
23. Remove both Lower Packings (#122) from inside the Upper Housing (#121). **WARNING: Always insert Packings with the raised side facing into the Upper Housing.**
24. Assemble in reverse order.  
**Be sure to use all of the replacement parts and tools supplied in the repacking Kit #761-175.**
25. Align Flats on Piston so that it is perpendicular to the Upper Mount (#114).
26. Reattach the four screws (#116) to the Pump Mount (#114).
27. Reattach Retaining Nut on Pipe Assembly (#110) to Connector (#120).  
NOTE: Make sure to fill the Upper Guide (#118) one-third (1/3) full with Piston Seal Lubricant.